



CUSTOMER:

Customer Name: ALINVEST

PROJECT:

Project Code: E2558

Project Name: ALFAGEN

DOCUMENT INFORMATION:



Document Title: Equipment Spider Diagram

Contractor File Name: 2558-3324-THD-E-DWG-SPD

Contractor Revision Number: A

Customer File Name: -

Customer Revision Number: -

						CONTRACTOR		CONTRACTOR dwg number 2558-3324-THD-E-DWG-SPD	Rev. A	Project Code E2558	Project Name ALFAGEN			
										Document Title Equipment Spider Diagram			Scale 1:1	
A	29/11/2025	INITIAL VERSION		RORI	RORI					RORI	DESIGNED: RORI			DRAWN: RORI
Rev.	Date	Revisions description			Designed	Draw	Approved	CLIENT dwg number -	Rev. -	DATE: 24/11/2025	DATE: 24/11/2025	DATE: 24/11/2025	Sheet 1 OF x	
1		2	3			4	5			6	7	8		9

POWER AND CONTROL PANEL


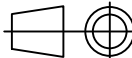
r46.41-3324-THD-GEN01-PCP01

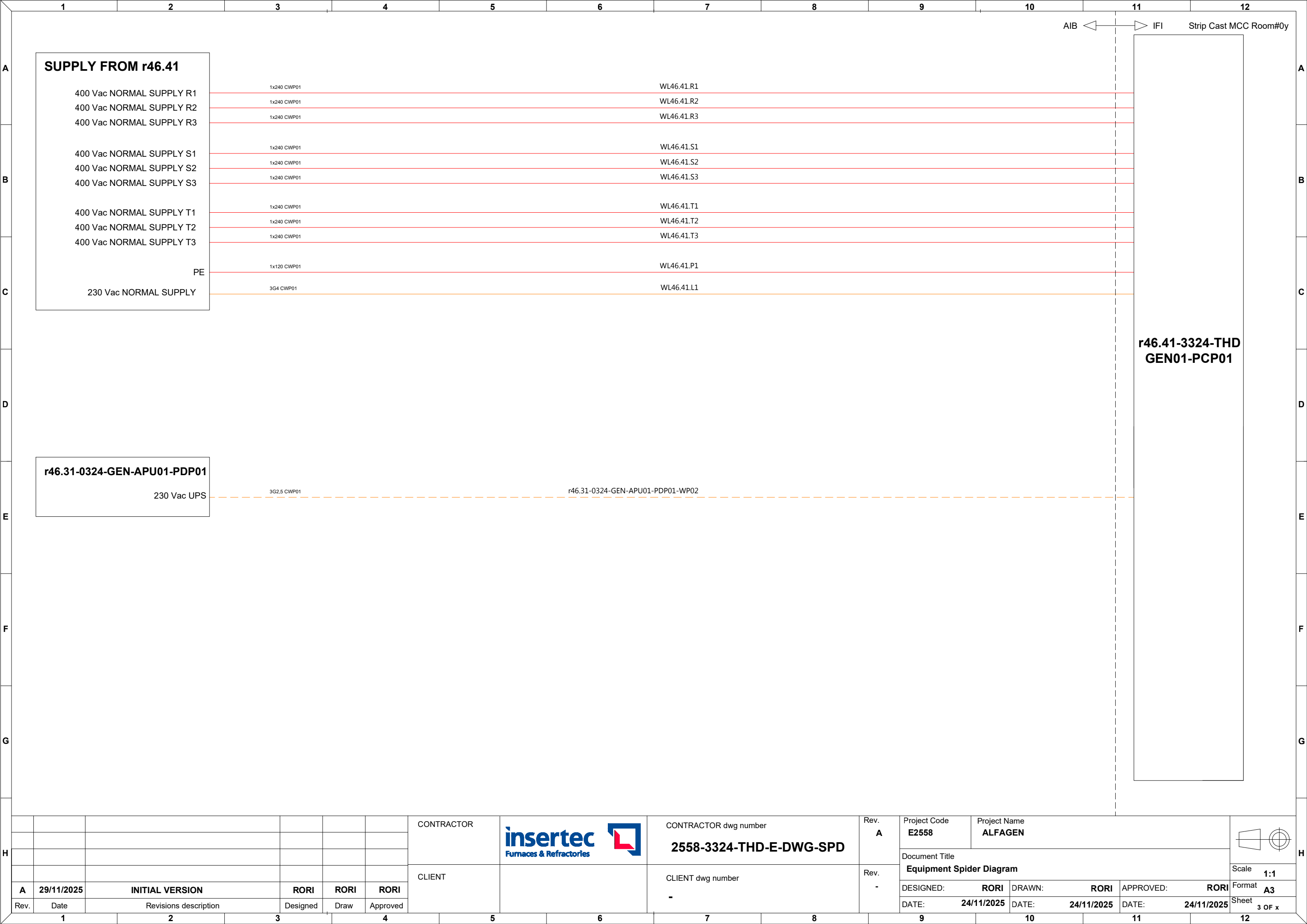
LEGEND

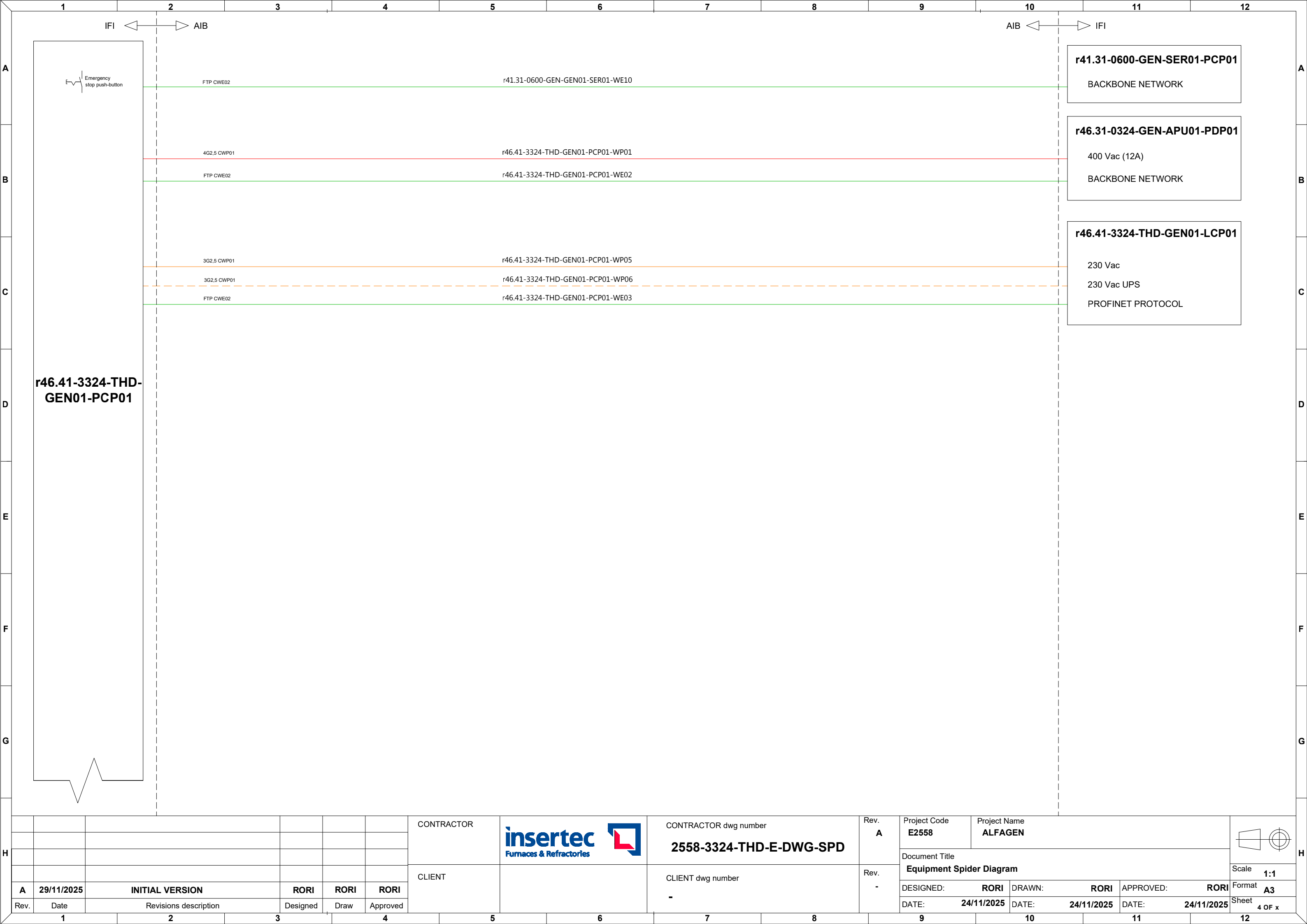
	400Vac Power supply		Regular control signals
	400Vac UPS power supply		Analog & shielded signals
	230Vac Power supply		T/C connection
	230Vac UPS power supply		Communication connection

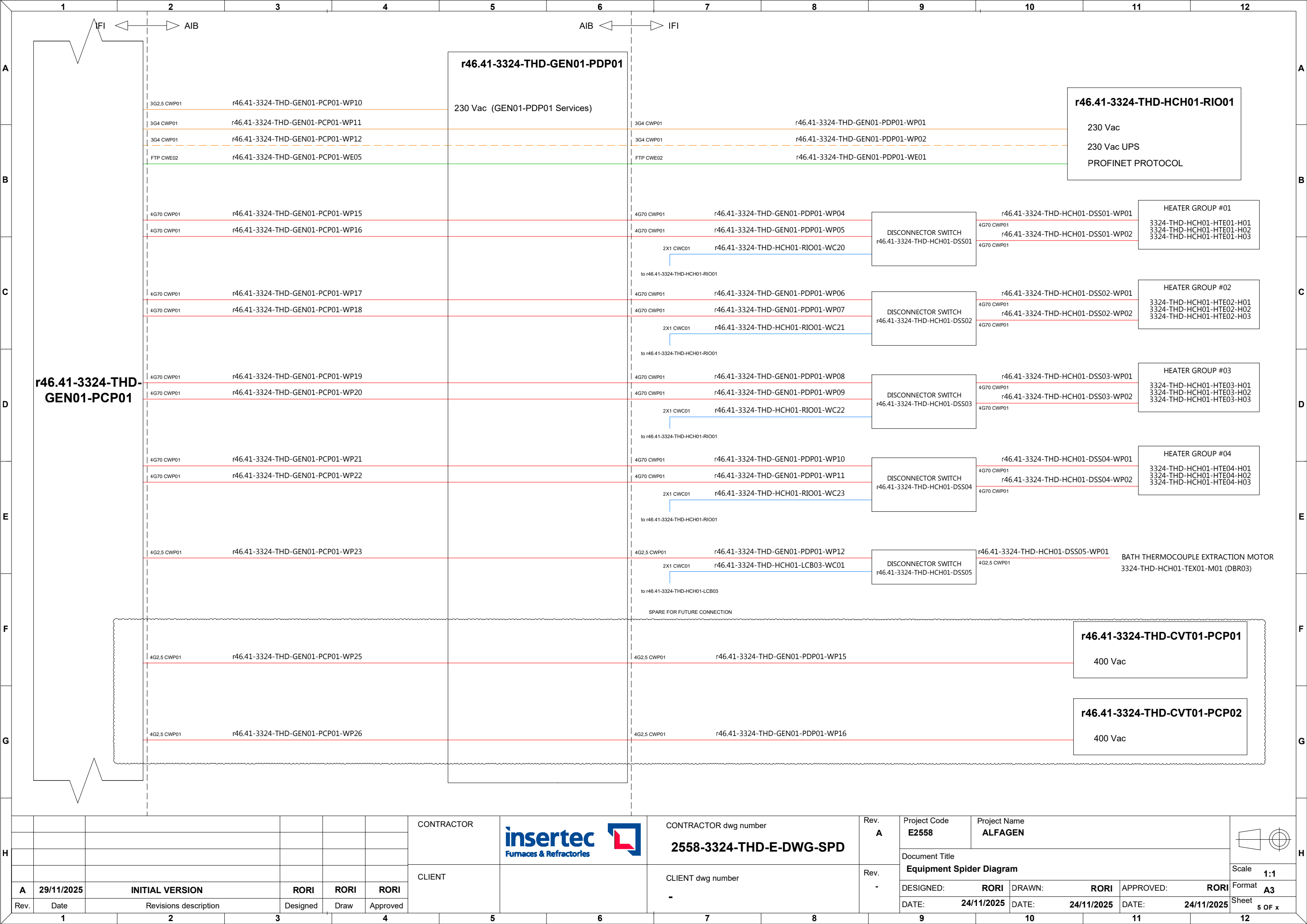
CATEGORY

Power cables
CWP01: Regular power cables
CWP02: Shielded power cable
CWP03: Flexible power cables
CWP04: Regular high temperature power cables
CWP05: Shielded high temperature power cables
CWP06: General use power cable
Instrumentation and control cables
CWC01: Regular instrumentation control cables
CWC02: Shielded instrumentation control cables
CWC03: Thermocouple cable
CWC04: Flexible instrumentation control cables
CWC05: High voltage cables for ignition transformers
CWC06: Regular high temperature instrumentation control cables
CWC07: Shielded high temperature instrumentation control cables
Communication cables
CWE01: Fieldbus communication cable (Inside cabinets)
CWE02: Fieldbus communication cable (Outside cabinets)
CWE03: Optic fibre communication cable

						CONTRACTOR		CONTRACTOR dwg number 2558-3324-THD-E-DWG-SPD	Rev. A	Project Code E2558	Project Name ALFAGEN			
										Document Title Equipment Spider Diagram			Scale 1:1	
A	29/11/2025	INITIAL VERSION		RORI	RORI					RORI	DESIGNED: RORI	DRAWN: RORI	APPROVED: RORI	
Rev.	Date	Revisions description		Designed	Draw	Approved	CLIENT	CLIENT dwg number -	Rev. -	DATE: 24/11/2025	DATE: 24/11/2025	DATE: 24/11/2025	Sheet 2 OF x	
1	2	3	4	5	6	7	8	9	10	11				








A	29/11/2025	INITIAL VERSION		RORI	RORI
Rev.	Date	Revisions description		Designed	Draw
				Approved	

CONTRACTOR



CONTRACTOR dwg number

2558-3324-THD-E-DWG-SPD

CLIENT

CLIENT dwg number

-

Rev. A

Rev. -

Project Code E2558

Project Name ALFAGEN

Document Title

Equipment Spider Diagram

DESIGNED: RORI

DRAWN: RORI

APPROVED: RORI

DATE: 24/11/2025

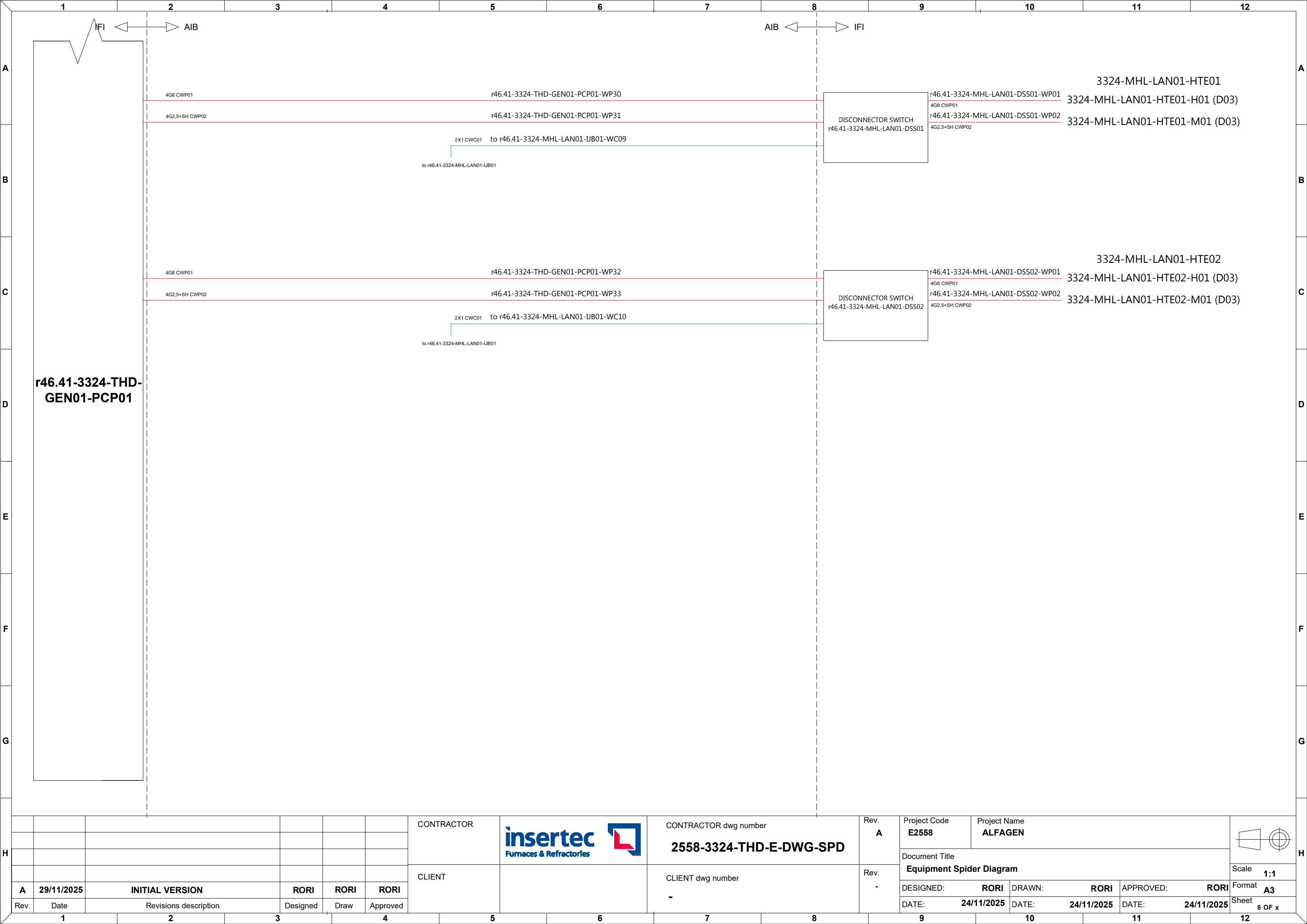
DATE: 24/11/2025


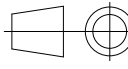
DATE: 24/11/2025

Scale 1:1

Format A3

Sheet 5 OF x



H							CONTRACTOR		CONTRACTOR dwg number	Rev. A	Project Code	Project Name				H		
							CLIENT		CLIENT dwg number	Rev. -	Document Title			Scale				
											Equipment Spider Diagram			1:1				
A	29/11/2025	INITIAL VERSION			RORI	RORI					RORI	DESIGNED: RORI	DRAWN: RORI	APPROVED: RORI	Format			
Rev.	Date	Revisions description			Designed	Draw	Approved	-										
	1	2		3	4		5	6	7	8	9		10		11		12	

LOCAL CONTROL PANEL


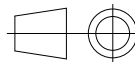
r46.41-3324-THD-GEN01-LCP01

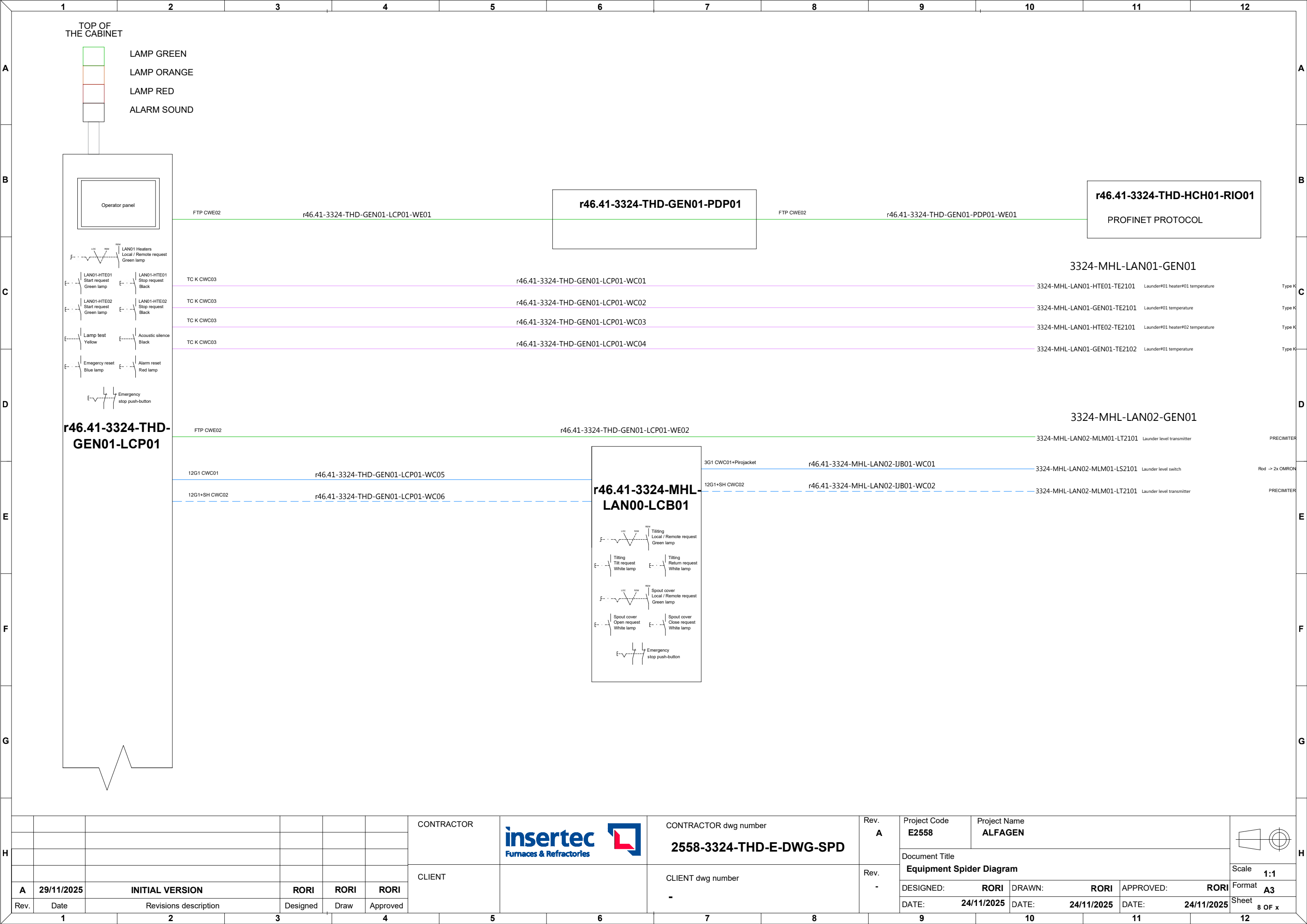
LEGEND


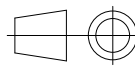
	400Vac Power supply		Regular control signals
	400Vac UPS power supply		Analog & shielded signals
	230Vac Power supply		T/C connection
	230Vac UPS power supply		Communication connection

CATEGORY

Power cables
CWP01: Regular power cables
CWP02: Shielded power cable
CWP03: Flexible power cables
CWP04: Regular high temperature power cables
CWP05: Shielded high temperature power cables
CWP06: General use power cable
Instrumentation and control cables
CWC01: Regular instrumentation control cables
CWC02: Shielded instrumentation control cables
CWC03: Thermocouple cable
CWC04: Flexible instrumentation control cables
CWC05: High voltage cables for ignition transformers
CWC06: Regular high temperature instrumentation control cables
CWC07: Shielded high temperature instrumentation control cables
Communication cables
CWE01: Fieldbus communication cable (Inside cabinets)
CWE02: Fieldbus communication cable (Outside cabinets)
CWE03: Optic fibre communication cable

						CONTRACTOR		CONTRACTOR dwg number 2558-3324-THD-E-DWG-SPD	Rev. A	Project Code E2558	Project Name ALFAGEN			
										Document Title Equipment Spider Diagram				
A	29/11/2025	INITIAL VERSION	RORI	RORI	RORI					Scale 1:1				
Rev.	Date	Revisions description	Designed	Draw	Approved	CLIENT		CLIENT dwg number -	Rev. -	DESIGNED: RORI	DRAWN: RORI	APPROVED: RORI	Format A3	
										DATE: 24/11/2025	DATE: 24/11/2025	DATE: 24/11/2025	Sheet 7 OF x	



						CONTRACTOR		CONTRACTOR dwg number 2558-3324-THD-E-DWG-SPD	Rev. A	Project Code E2558	Project Name ALFAGEN			
										Document Title Equipment Spider Diagram				
A	29/11/2025	INITIAL VERSION		RORI	RORI	RORI	CLIENT	CLIENT dwg number -	Rev. -	DESIGNED: RORI		DRAWN: RORI	APPROVED: RORI	Scale 1:1
Rev.	Date	Revisions description		Designed	Draw	Approved				Format A3				
										DATE: 24/11/2025		DATE: 24/11/2025	DATE: 24/11/2025	Sheet 8 OF x

HOLDING CHAMBER REMOTE IO


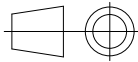
r46.41-3324-THD-HCH01-RIO01

LEGEND



	400Vac Power supply		Regular control signals
	400Vac UPS power supply		Analog & shielded signals
	230Vac Power supply		T/C connection
	230Vac UPS power supply		Communication connection

CATEGORY

Power cables
CWP01: Regular power cables
CWP02: Shielded power cable
CWP03: Flexible power cables
CWP04: Regular high temperature power cables
CWP05: Shielded high temperature power cables
CWP06: General use power cable
Instrumentation and control cables
CWC01: Regular instrumentation control cables
CWC02: Shielded instrumentation control cables
CWC03: Thermocouple cable
CWC04: Flexible instrumentation control cables
CWC05: High voltage cables for ignition transformers
CWC06: Regular high temperature instrumentation control cables
CWC07: Shielded high temperature instrumentation control cables
Communication cables
CWE01: Fieldbus communication cable (Inside cabinets)
CWE02: Fieldbus communication cable (Outside cabinets)
CWE03: Optic fibre communication cable

						CONTRACTOR		CONTRACTOR dwg number 2558-3324-THD-E-DWG-SPD	Rev. A	Project Code E2558	Project Name ALFAGEN			
										Document Title Equipment Spider Diagram			Scale 1:1	
A	29/11/2025	INITIAL VERSION	RORI	RORI	RORI					DESIGNED: RORI	DRAWN: RORI	APPROVED: RORI	Format A3	
Rev.	Date	Revisions description	Designed	Draw	Approved	CLIENT		CLIENT dwg number -	Rev. -	DATE: 24/11/2025	DATE: 24/11/2025	DATE: 24/11/2025	Sheet 10 OF x	
1	2	3	4	5	6					9	10	11	12	



						CONTRACTOR		CONTRACTOR dwg number 2558-3324-THD-E-DWG-SPD	Rev. A	Project Code E2558	Project Name ALFAGEN												
										Document Title Equipment Spider Diagram			Scale 1:1										
A	29/11/2025	INITIAL VERSION		RORI	RORI					RORI	CLIENT dwg number -	Rev. -	DESIGNED: RORI		DRAWN: RORI	APPROVED: RORI	Format A3						
Rev.	Date	Revisions description		Designed	Draw	Approved		DATE: 24/11/2025	DATE: 24/11/2025	DATE: 24/11/2025	Sheet 11 OF x												
1		2		3		4		5		6			7		8		9		10		11		12

CVS POWER AND CONTROL PANEL
r46.41-3324-THD-CVT01-POP01


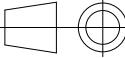
SPARE FOR FUTURE CONNECTION

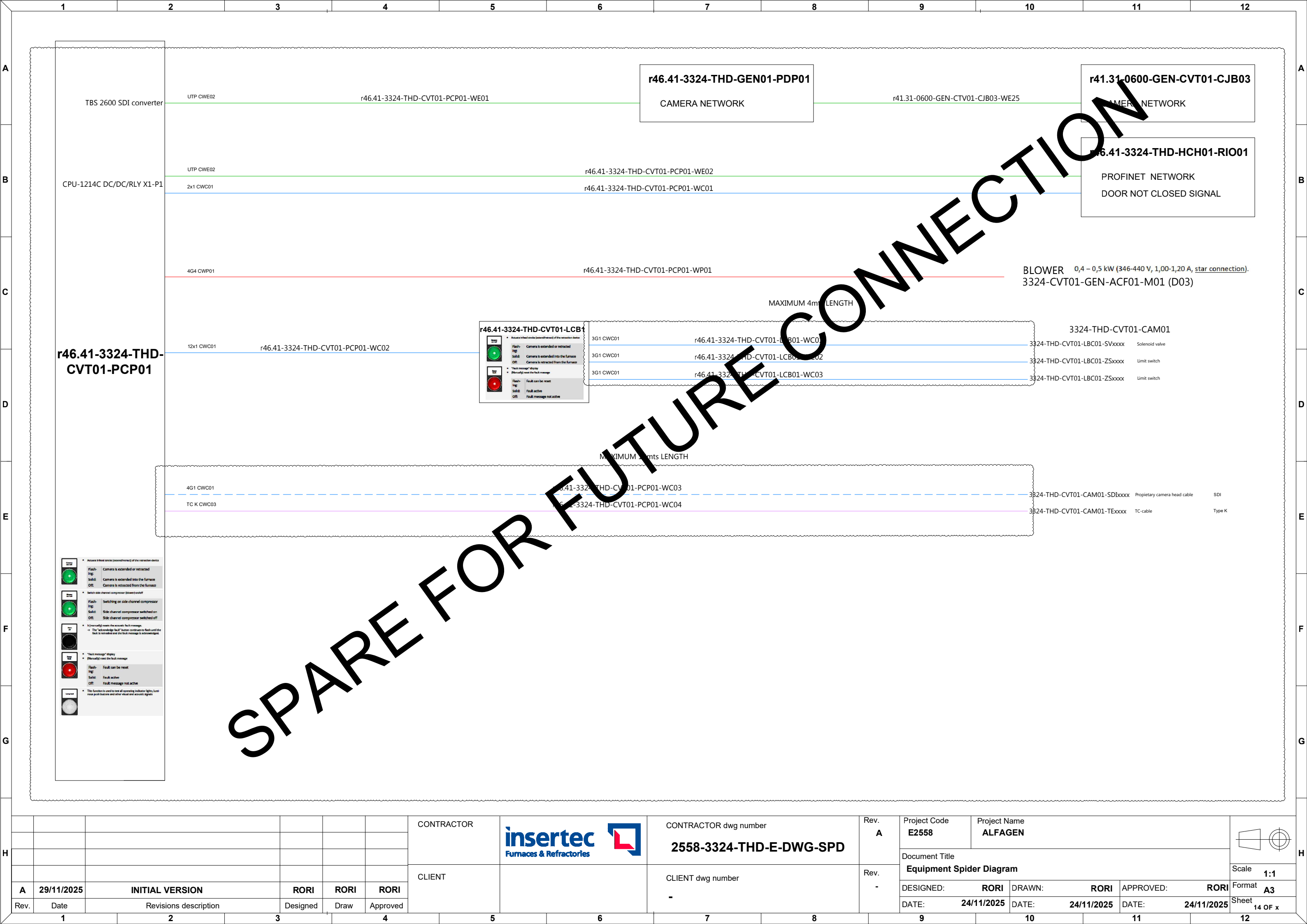
LEGEND


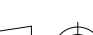
- 400Vac Power supply
- 400Vac UPS power supply
- 230Vac Power supply
- 230Vac UPS power supply
- Regular control signals
- Analog & shielded signals
- T/C connection
- Communication connection

CATEGORY

- Power cables
- CWP01: Regular power cables
- CWP02: Shielded power cable
- CWP03: Flexible power cables
- CWP04: Regular high temperature power cables
- CWP05: Shielded high temperature power cables
- CWP06: General use power cable
- Instrumentation and control cables
- CWC01: Regular instrumentation control cables
- CWC02: Shielded instrumentation control cables
- CWC03: Thermocouple cable
- CWC04: Flexible instrumentation control cables
- CWC05: High voltage cables for ignition transformers
- CWC06: Regular high temperature instrumentation control cables
- CWC07: Shielded high temperature instrumentation control cables
- Communication cables
- CWE01: Fieldbus communication cable (Inside cabinets)
- CWE02: Fieldbus communication cable (Outside cabinets)
- CWE03: Optic fibre communication cable

						CONTRACTOR		CONTRACTOR dwg number 2558-3324-THD-E-DWG-SPD	Rev. A	Project Code E2558	Project Name ALFAGEN			
										Document Title Equipment Spider Diagram			Scale 1:1	
A	29/11/2025	INITIAL VERSION		RORI	RORI					RORI	DESIGNED: RORI	DRAWN: RORI	APPROVED: RORI	
Rev.	Date	Revisions description		Designed	Draw	Approved	CLIENT	CLIENT dwg number -	Rev. -	DATE: 24/11/2025	DATE: 24/11/2025	DATE: 24/11/2025	Sheet 13 OF x	
1	2	3	4	5	6	7	8	9	10	11	12			



						CONTRACTOR	<div><div>insertec</div><div>Furnaces & Refractories</div></div> <div></div>	CONTRACTOR dwg number	Rev. A	Project Code E2558	Project Name ALFAGEN			<div></div>	
								2558-3324-THD-E-DWG-SPD		Document Title					
										Equipment Spider Diagram			Scale 1:1		
A	29/11/2025	INITIAL VERSION			RORI	RORI	RORI	CLIENT dwg number -	Rev. -	DESIGNED: RORI			DRAWN: RORI	APPROVED: RORI	Format A3
Rev.	Date	Revisions description			Designed	Draw	Approved			DATE: 24/11/2025			DATE: 24/11/2025	DATE: 24/11/2025	Sheet 14 OF x

CVS POWER AND CONTROL PANEL

r46.41-3324-THD-CVT01-POP02


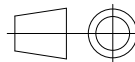
SPARE FOR FUTURE CONNECTION

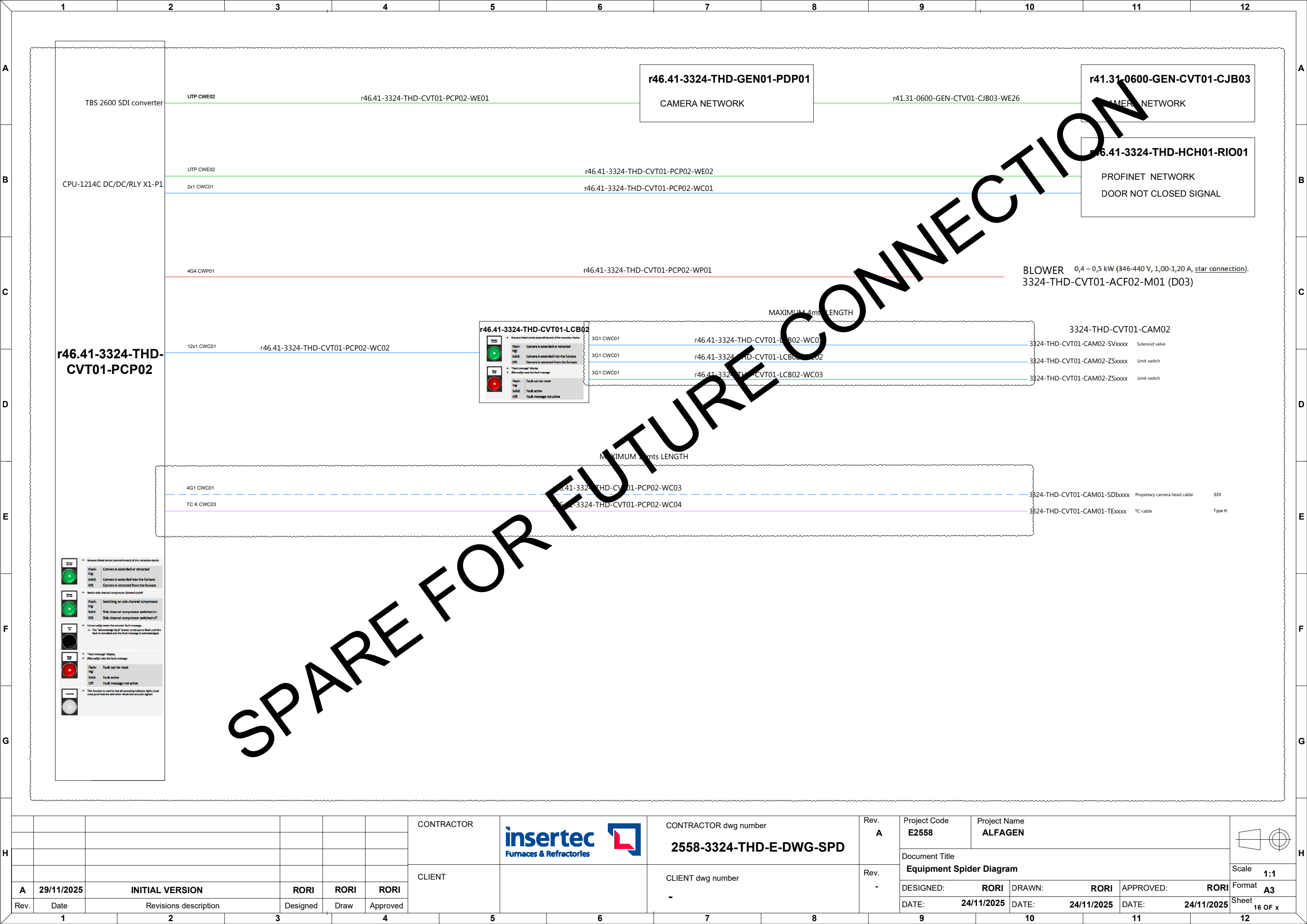
LEGEND



- 400Vac Power supply
- 400Vac UPS power supply
- 230Vac Power supply
- 230Vac UPS power supply
- Regular control signals
- Analog & shielded signals
- T/C connection
- Communication connection

CATEGORY

- Power cables
- CWP01: Regular power cables
- CWP02: Shielded power cable
- CWP03: Flexible power cables
- CWP04: Regular high temperature power cables
- CWP05: Shielded high temperature power cables
- CWP06: General use power cable
- Instrumentation and control cables
- CWC01: Regular instrumentation control cables
- CWC02: Shielded instrumentation control cables
- CWC03: Thermocouple cable
- CWC04: Flexible instrumentation control cables
- CWC05: High voltage cables for ignition transformers
- CWC06: Regular high temperature instrumentation control cables
- CWC07: Shielded high temperature instrumentation control cables
- Communication cables
- CWE01: Fieldbus communication cable (Inside cabinets)
- CWE02: Fieldbus communication cable (Outside cabinets)
- CWE03: Optic fibre communication cable

						CONTRACTOR		CONTRACTOR dwg number 2558-3324-THD-E-DWG-SPD	Rev. A	Project Code E2558	Project Name ALFAGEN			
										Document Title Equipment Spider Diagram				
A	29/11/2025	INITIAL VERSION		RORI	RORI	RORI	CLIENT		CLIENT dwg number -	Rev. -	DESIGNED: RORI DRAWN: RORI APPROVED: RORI			Scale 1:1
Rev.	Date	Revisions description		Designed	Draw	Approved					DATE: 24/11/2025 DATE: 24/11/2025 DATE: 24/11/2025			Format A3
														Sheet 15 OF x



						CONTRACTOR		CONTRACTOR dwg number 2558-3324-THD-E-DWG-SPD	Rev. A	Project Code E2558	Project Name ALFAGEN			
										Document Title Equipment Spider Diagram				
A	29/11/2025	INITIAL VERSION		RORI	RORI	RORI	CLIENT	CLIENT dwg number -	Rev. -	DESIGNED: RORI	DRAWN: RORI	APPROVED: RORI	Scale 1:1	
Rev.	Date	Revisions description		Designed	Draw	Approved				Format A3				
										DATE: 24/11/2025	DATE: 24/11/2025	DATE: 24/11/2025	Sheet 16 OF x	